

STATE OF OHIO
DEPARTMENT OF HIGHWAYS

SEN-224-(10.35-10.66) & SEN-18-11.66

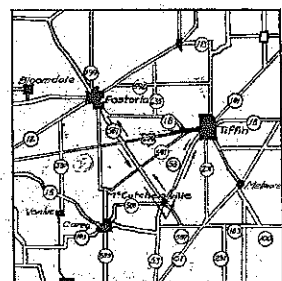
SENECA COUNTY

HOPEWELL TOWNSHIP

FED. RD. DIVISION	STATE	PROJECT	TYPE FUNDS
2	OHIO	STATE	

SENECA COUNTY
SEN-224-(10.35-10.66)
SEN-18-11.66

Note: All references to Federal Project Numbers appearing in these plans shall be disregarded.

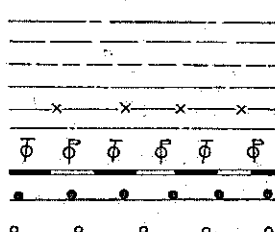


DETOUR MAP

CONVENTIONAL

COUNTY LINE
TOWNSHIP LINE
SECTION LINE
CORPORATION LINE
FENCE LINE
CENTER LINE
POLE LINE
RAILROAD
GUARD RAIL
GUARD RAIL POSTS

SIGNS



LINE DATA

BEGIN WORK STA 2+16
BEGIN PROJECT STA 3+50
END WORK & PROJECT STA 19+21.89
GROSS LENGTH - NET LENGTH OF WORK = 1705.89 LIN. FT. @ 0.323 MI.
GROSS LENGTH - NET LENGTH OF PROJECT = 1571.89 LIN. FT. @ 0.297 MI.

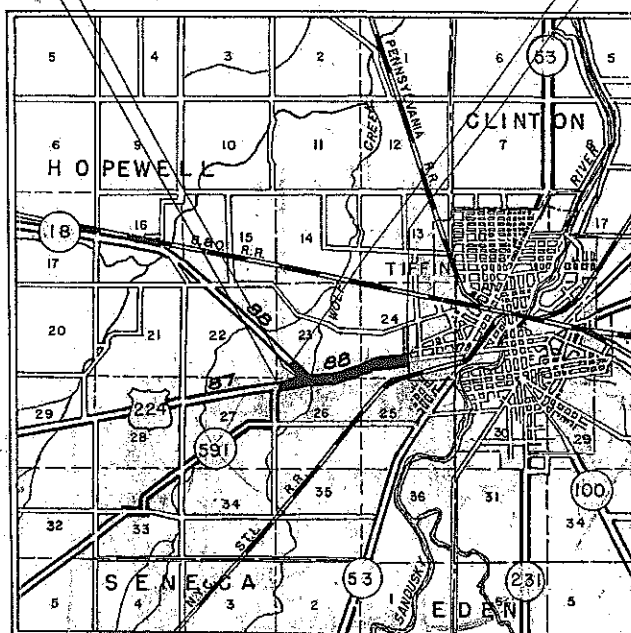
BEGIN WORK STA 519+00
BEGIN PROJECT STA 520+00
END WORK & PROJECT STA 79+71.75
STATION EQUATION STA 531+40 BACK - STA 20+00 AHEAD
STA 519+00 TO STA 531+40 = 1240 LIN. FT.
STA 520+00 TO STA 531+40 = 1140 LIN. FT.
STA 20+00 TO STA 79+71.75 = 5971.75 LIN. FT.
GROSS LENGTH - NET LENGTH OF WORK = 1240 + 5971.75 - 7210.71 LIN. FT. = 1365 MI.
GROSS LENGTH - NET LENGTH OF PROJECT = 1140 + 5971.75 - 7110.71 LIN. FT. = 1346 MI.

TOTAL NET LENGTH OF WORK = 1705.89 + 7210.71 = 8916.60 LIN. FT. OR 1.68 MI.
TOTAL NET LENGTH OF PROJECT = 1571.89 + 7110.71 = 8682.60 LIN. FT. OR 1.64 MI.
* Equation Sta. 26+53.36 Back = Sta. 26+54.40 Ahead.

INDEX OF SHEETS

TITLE SHEET	1
TYPICAL SECTIONS	2
GENERAL NOTES	2, 3, 8, 7
PAVEMENT COMPUTATIONS	3
GENERAL SUMMARY	3
DETAILS	4
SUMMARIES	5-6
TREE & STUMP SCHEDULE	7
PLAN & PROFILE	8-17
CROSS SECTIONS	18-30
STRUCTURE DETAILS	31-32
CHANNEL CROSS SECTIONS	33-34

Reviewed & Approved: *[Signature]*
Date: *6/2/54* Engineer of Traffic & Safety



DELIVERY POINT: TIFFIN AVERAGE HAUL 1.5 MI.

LOCATION PLAN

Scale 1"=1 MI.

PORTION TO BE IMPROVED
STATE HIGHWAYS
OTHER ROADS
DETOURS (See Detour Map)

SCALES

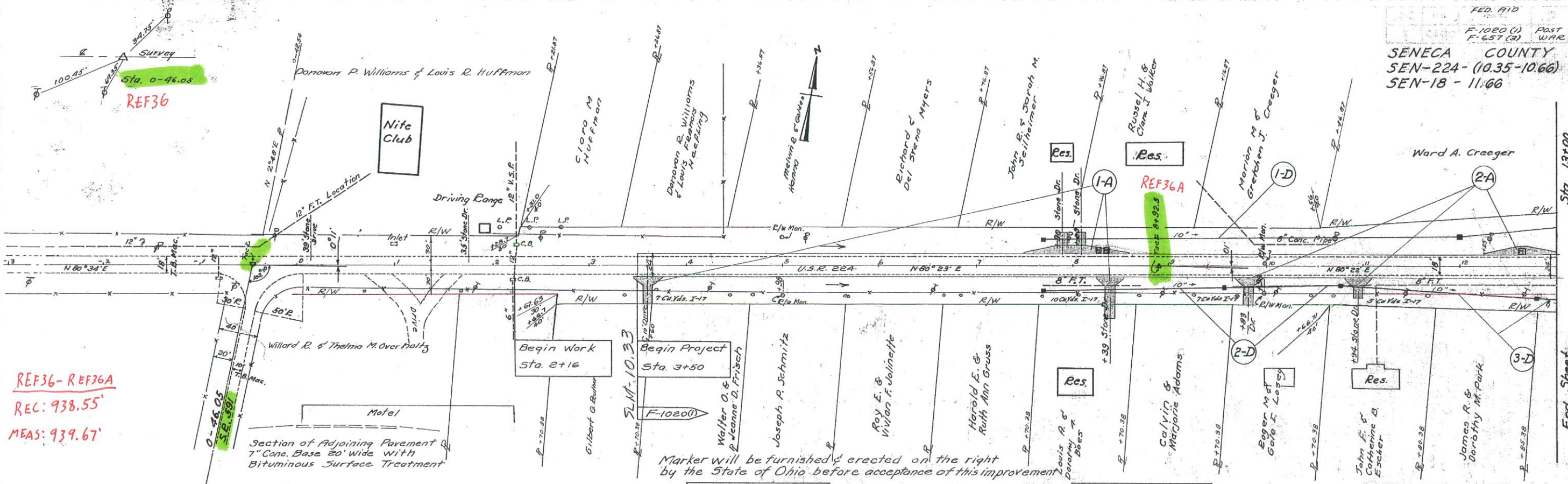
PLAN 1"=50' & 20'
PROFILE HORIZONTAL 1"=50' & 20'
PROFILE VERTICAL 1"=5'
CROSS SECTIONS 1"=5'

CONSTRUCTION
BUREAU
JUL 19 1954
GROUND PHOTO LAB

SUPPLEMENTAL SPECIFICATIONS	STANDARD	DRAWINGS
L-3-J 4-1-50	L-3-A 4-1-50	I-8 MH No. 2 5-1-52
I-1, 2, 3, 4, 5 5-1-52	I-1, 2, 3, 4, 5 5-1-52	I-12 7-25-52
I-8, 9, 10, 11, 12 5-1-52	I-8, 9, 10, 11, 12 5-1-52	I-6 7-07 1-2-53
I-13, 14, 15, 16, 17, 18, 19, 20, 21, 22, 23, 24, 25, 26, 27, 28, 29, 30, 31, 32, 33, 34, 35, 36, 37, 38, 39, 40, 41, 42, 43, 44, 45, 46, 47, 48, 49, 50, 51, 52, 53, 54, 55, 56, 57, 58, 59, 60, 61, 62, 63, 64, 65, 66, 67, 68, 69, 70, 71, 72, 73, 74, 75, 76, 77, 78, 79, 80, 81, 82, 83, 84, 85, 86, 87, 88, 89, 90, 91, 92, 93, 94, 95, 96, 97, 98, 99, 100 5-1-52	I-8, 9, 10, 11, 12 5-1-52	I-6 7-07 1-2-53
I-101 5-1-52	I-101 5-1-52	I-101 5-1-52
I-102 5-1-52	I-102 5-1-52	I-102 5-1-52
I-103 5-1-52	I-103 5-1-52	I-103 5-1-52
I-104 5-1-52	I-104 5-1-52	I-104 5-1-52
I-105 5-1-52	I-105 5-1-52	I-105 5-1-52
I-106 5-1-52	I-106 5-1-52	I-106 5-1-52
I-107 5-1-52	I-107 5-1-52	I-107 5-1-52
I-108 5-1-52	I-108 5-1-52	I-108 5-1-52
I-109 5-1-52	I-109 5-1-52	I-109 5-1-52
I-110 5-1-52	I-110 5-1-52	I-110 5-1-52
I-111 5-1-52	I-111 5-1-52	I-111 5-1-52
I-112 5-1-52	I-112 5-1-52	I-112 5-1-52
I-113 5-1-52	I-113 5-1-52	I-113 5-1-52
I-114 5-1-52	I-114 5-1-52	I-114 5-1-52
I-115 5-1-52	I-115 5-1-52	I-115 5-1-52
I-116 5-1-52	I-116 5-1-52	I-116 5-1-52
I-117 5-1-52	I-117 5-1-52	I-117 5-1-52
I-118 5-1-52	I-118 5-1-52	I-118 5-1-52
I-119 5-1-52	I-119 5-1-52	I-119 5-1-52
I-120 5-1-52	I-120 5-1-52	I-120 5-1-52
I-121 5-1-52	I-121 5-1-52	I-121 5-1-52
I-122 5-1-52	I-122 5-1-52	I-122 5-1-52
I-123 5-1-52	I-123 5-1-52	I-123 5-1-52
I-124 5-1-52	I-124 5-1-52	I-124 5-1-52
I-125 5-1-52	I-125 5-1-52	I-125 5-1-52
I-126 5-1-52	I-126 5-1-52	I-126 5-1-52
I-127 5-1-52	I-127 5-1-52	I-127 5-1-52
I-128 5-1-52	I-128 5-1-52	I-128 5-1-52
I-129 5-1-52	I-129 5-1-52	I-129 5-1-52
I-130 5-1-52	I-130 5-1-52	I-130 5-1-52

FILE	SEN-224-(10.35-10.66)	SEN-18-11.66
NO.		
DATE OF LETTING		
CONTRACT NO.		

FED. AID
F-1020 (1) POST
F-657 (3) WAR
9
34
SENECA COUNTY
SEN-224- (10.35-10.66)
SEN-18 - 11.66



REF36- REF36A
REC: 938.55'
MEAS: 939.67'

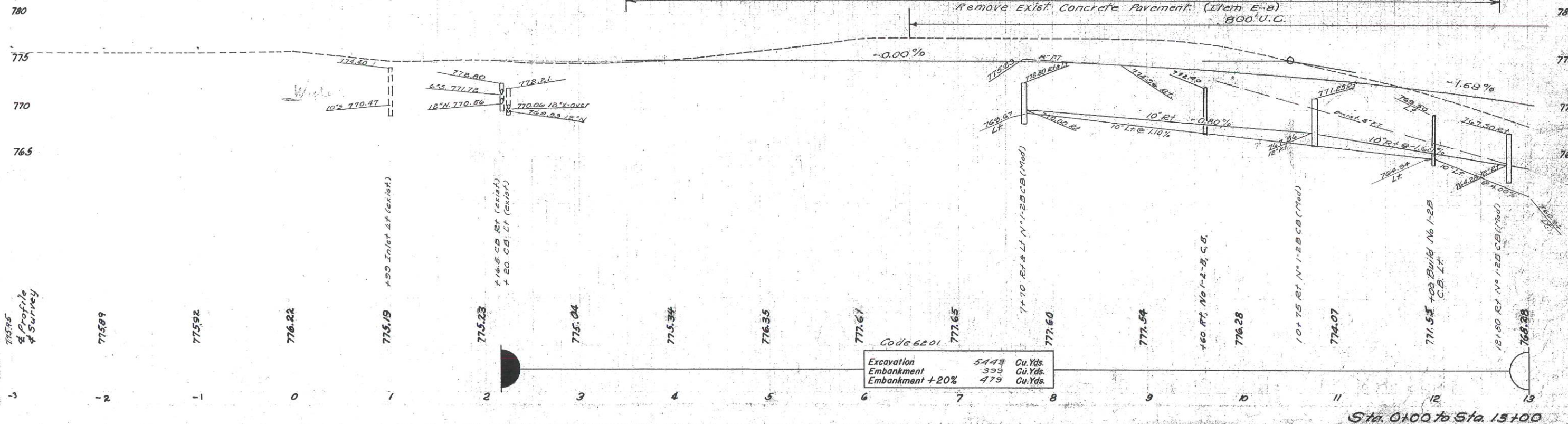
B.M. Sta. 0+81
X on East End Conc. Hdwl.
on Rt. Elev. 775.89

B.M. Sta. 1+12
So. East Corner of Porch
at 224 Club 85' Lt.
Elev. 776.64

B.M. Sta. 4+22
Nail in Power Pole 26' Rt.
Elev. 777.56

B.M. Sta. 8+46
Nail in Power Pole
48' Rt. Elev. 778.33

B.M. Sta. 11+44
Nail in Telephone Pole
30' Rt. Elev. 773.71



Sta. 0+00 to Sta. 13+00